

## Sobremesas

---



**Gelado de Chocolate**

22



**Chocolate Mousse**

10

## Sem categoria

---



**Enchimento**

## Pratos de massa

---



**Ravioli**

9

## Pratos de peixe

---



**Peixes**

7



**Peixe do dia**

## Rigatoni

---

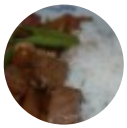


**Chef**

10

## Fleisch - Schweinesteak

---



**Bife**

9

## Pizza - mittel Ø 26cm

---



**Milanès**