

## Soups\*

---



**Chicken Corn Soup 38622; 33993; 31903; 31859; 28271;**

\$5.9



**Chicken Mushroom Soup 38622; 33993; 20908; 33735; 28271;**

\$5.9



**Shredded Duck Soup 40232; 32114; 32697;**

\$6.1



**Won ton (Dumplings) Soup 38642; 21534; 28271;**

\$7.0



**Long (Noodles) Soup 40629; 28271;**

\$5.4



**Combination Soup 38620; 29172; 28271;**

\$8.1



**Szechuan Hot Sour Soup 22235; 24029; 37240; 36771; 28271;**

\$7.0



**Tom Yum Soup 20908; 38512; 21151; 28271;**

\$7.0



**Seafood w Bean Curd Soup 28023; 39854; 35910; 33104; 28271;**

\$8.1



**Chicken Shark Fin Soup 38622; 32905; 39770; 32709; 28271;**

\$9.2

## Seafood

---



**Satay Prawns 27801; 29241; 34662; 29699;**

\$29.0



**Curry Prawns 21654; 21937; 34662; 29699;**

\$29.0



**Prawns with Vegetable 26178; 33756; 34662; 29699;**

\$29.0



**Prawns with Szechuan Sauce 22235; 24029; 37292; 29190; 34662; 29699;**

\$29.0



**Spicy Salt Chilli Prawns 26898; 40573; 34662; 29699;**

\$29.0



**Deep Fried Prawns with Salted Egg Yolk 40643; 37329; 34662; 29699;**

\$32.2



**Prawns with Creamy Scrambled Egg 28369; 34507; 34662; 29699;**

\$29.0



**Prawns Scallops Bird's Nest 34662; 29699; 24118; 23376; 24034;**

\$30.1



**Seafood in Bird's Nest 28023; 39854; 24034;**

\$30.1



**Scallops with Satay Sauce 27801; 29241; 24118; 23376;**

\$30.1



**Scallops with Ginger Shallots 34193; 34085; 24118; 23376;**

\$30.1



**Scallops with Vegetables 26178; 33756; 24118; 23376;**

\$30.1



**Scallops with Cashew Nuts 33136; 26524; 24118; 23376;**

**\$30.1**



**Deep Fried Scallops with Salted Egg Yolk**

**\$32.2**



**Fried Scallops with Dry Lily and Egg White**

**\$32.2**



**Fish Fillets with Ginger Shallot 34193; 34085; 26001; 22602;**

**\$23.6**



**Fish Fillets with Chinese Vege 26178; 33756; 26001; 22602;**

**\$23.6**



**Fish Fillets with Sweet Corn Sauce 31903; 31859; 26001; 22602;Fish**

**\$23.6**



**Clam Chinese Donuts with XO Sauce XO 28818; 34566; 27833; 26781; 24213;**

**\$25.8**



**Clam Chinese Donuts with Black Bean Sauce 35913; 27713; 28818; 34566; 27833; 26781; 24213;**

**\$25.8**



**Shrimp Balls Preserved Egg 30382; 34507; 34662; 20024;**

**\$26.8**



**Spicy Salt Chilli Soft Shell Crab (Each)**

**\$10.7**

## **Pork**

---



**BBQ Pork w Satay Sauce 27801; 29241; 21449; 29138;**

\$20.4



**BBQ Pork with Curry Sauce 21654; 21937; 21449; 29138;**

\$20.4



**BBQ Pork with Szechuan Sauce 22235; 24029; 37292; 29190; 21449; 29138;**

\$20.4



**BBQ Pork with Cashew Nuts 33136; 26524; 21449; 29138;**

\$21.5

## Beef

---



**Stir Fried Beef with Chinese Donuts 39740; 39340; 65288; 27833; 26781; 65289;  
28818; 29275; 32905;**

\$23.6



**Beef with Satay Sauce 27801; 29241; 29275; 32905;**

\$23.6



**Beef with Curry Sauce 21654; 21937; 29275; 32905;**

\$23.6



**Beef with Szechuan Sauce 22235; 24029; 37233; 29190; 29275; 32905;**

\$23.6



**Beef with Seasonal Vegetable 26178; 33756; 29275; 32905;**

\$23.6



**Shredded Beef Fillets Peking Sauce 24185; 29138; 29275; 26611; 32114;**

\$25.8



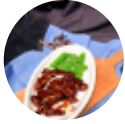
**Black Pepper Fillet Steak 40657; 26898; 29275; 26611;**

\$25.8



**Beef Fillet Cubes in Garlic Maggi 32654; 26997; 29275; 26611; 31890;**

\$25.8



**Cantonese Fillet Steak 39321; 29006; 20013; 24335; 29275; 26611;**

\$25.8

## Rice

---



**Salted Fish Chicken Fried Rice 40569; 39770; 40388; 31890; 28818; 39151;**

\$14.3



**Mince Beef Fried Rice 29983; 28818; 29275; 32905; 39151;**

\$13.4



**Diced Chicken Fried Rice 29983; 28818; 38622; 29699; 39151;**

\$13.4



**Fried Rice in Hokkien Style 31119; 24314; 28818; 39151;**

\$19.0



**Fried Rice with Shrimps Sliced Chicken in 2 Sauces 40219; 40230; 28818; 39151;**

\$20.6



**Dried Scallops Prawns Fried Rice 29796; 26609; 34507; 30333; 34662; 20161;  
28818; 39151;**

\$19.0



**Beef Brisket with Rice 29275; 33129; 39151;**

\$13.7



**Beef Vegetables with Rice 33756; 36960; 29275; 33129; 39151;**

**\$13.7**



**Beef Tomato Sauce with Rice 39854; 33540; 29275; 32905; 39151;**

**\$13.7**



**Beef in Creamy Scrambled Egg Sauce with Rice 28369; 34507; 29275; 32905; 39151;** \$13.7



**Beef Bitter Melon in Black Bean Sauce with Rice**

**\$14.7**



**Minced Beef Fresh Egg with Rice 31401; 34507; 20813; 27835; 29275; 32905; 39151;** \$13.7



**Beef in Curry Sauce with Rice 21654; 21937; 29275; 32905; 39151;**

**\$13.7**



**Beef in Satay Sauce with Rice 27801; 29241; 29275; 32905; 39151;**

**\$13.7**



**Beef in Szechuan Sauce with Rice 22235; 24029; 37292; 29190; 29275; 32905; 39151;** \$13.7



**Sweet Pork with Rice 21653; 21694; 32905; 39151;**

**\$13.7**



**Spicy Salt Chilli Pork with Rice 26898; 40573; 25490; 39592; 39151;**

**\$13.7**



**Pork Spare Ribs in Black Bean Sauce with Rice 35913; 27713; 25490; 39592; 39151;** \$13.7



**Pork Spare Ribs in Mandarin Sauce with Rice**

**\$13.7**



**Pork Belly Preserved Vegetable with Rice**

\$13.7



**Pork Spare Ribs in Tomato Sauce with Rice 39854; 33540; 35948; 25170; 39151;**

\$13.7



**Eggplant Minced Chicken in Salted Fish Sauce with Rice 39770; 39321; 33540; 23376; 39151;**

\$13.7



**Lemon Chicken with Rice 27320; 27308; 40388; 39151;**

\$13.7



**Diced Chicken Sweet Corn Sauce with Rice 31903; 31859; 38622; 31890; 39151;**

\$13.7



**Chicken in Curry Sauce with Rice 21654; 21937; 38622; 29699; 39151;**

\$13.7



**Chicken in Satay Sauce with Rice 27801; 29241; 40388; 29699; 39151;**

\$13.7



**Chicken in Scrambled Egg Sauce with Rice 28369; 34507; 40388; 29699; 39151;**

\$13.7



**Spicy Salt Chilli Chicken Spare Ribs with Rice 26898; 40573; 40388; 25170; 39151;**

\$13.7



**Chicken in Szechuan Sauce with Rice 22235; 24029; 37292; 29190; 40388; 32905; 39151;**

\$13.7



**Combination with Rice 20160; 29172; 39151;**

\$14.7



**Roast Pork Bean Curd with Rice 28779; 33129; 35910; 33104; 39151;**

\$13.7



**Stir Fried Fish Fillet in Sweet Corn Sauce with Rice 31903; 31859; 26001; 22602; 39151;** \$14.7



**Fish Fillet Dried Tofu with Rice 25903; 31481; 39770; 22602; 35910; 33104; 39151;** \$14.7



**Prawns in Creamy Scrambled Egg Sauce with Rice 28369; 34507; 34662; 20161; 39151;** \$14.7



**Egg Bean Curd Minced Combination with Rice 22235; 23542; 29577; 23376; 35910; 33104; 39151;** \$14.7



**Ma Po Tofu with Rice 40635; 23110; 35910; 33104; 39151;** \$13.7



**Steamed Rice (Small Large) 196. 32114; 33495; 30333; 39151; 65288; 23567; 65289;** \$2.7

## **Chicken\***

---



**Chicken with Satay 27801; 29241; 38622;** \$21.5



**Curry Chicken 21654; 21937; 38622;** \$21.5



**Chicken with Szechuan Sauce 22235; 24029; 37233; 29190; 38622;** \$21.5



**Chicken with Seasonal Vegetables 26178; 33756; 38622;** \$21.5





**Chicken with Cashew Nuts 33136; 26524; 38622; 19969;**

**\$21.5**



**Chicken Spare Ribs with Salted Egg Yolk 40643; 37329; 38622; 25170;**

**\$23.6**

## **Noodles**

---



**Dried Noodles 20928; 25736; 40629;**

**\$9.5**



**Wonton (Dumplings) Dried Noodles 38642; 21534 27700; 39171 25736; 40629;**

**\$16.3**



**Ginger Shallot Dried Noodles 34193; 33905; 25736; 40629;**

**\$12.6**



**Shredded Pork Crispy Egg Noodles 32905; 32114; 28818; 40629;Shredded**

**\$14.7**



**Combination Crispy Egg Noodles 20160; 29172; 28818; 40629;Combination**

**\$17.9**



**Chicken Crispy Egg Noodles 40388; 32905; 28818; 40629;Chicken**

**\$15.8**



**BBQ Pork Crispy Egg Noodles 21449; 29138; 28818; 40629;BBQ**

**\$15.8**



**Seafood Crispy Egg Noodles 28023; 39854; 28818; 40629;Seafood**

**\$20.4**



**Prawn Crispy Egg Noodles 34662; 29699; 28818; 40629;Prawn**

\$20.4



**Vegetarian Crispy Egg Noodles 32645; 28450; 40779; 28818; 40629;Vegetarian 127793;**

\$14.0



**Crispy Egg Noodles with Supreme Soy Sauce 35913; 27833; 30343; 28818; 40629;Crispy**

\$13.7



**Fish Fillet Vege with Crispy Egg Noodles 26178; 33756; 39770; 22602; 28818; 40629;Fish**

\$15.8



**Stir Fried Flat Noodles with Thai Basil 28818; 36020; 20993;Stir**

\$14.7



**Beef Bean Shoot Flat Noodles 20094; 28818; 29275; 27827;Beef**

\$14.7



**Beef Vegetables Flat Noodles 33756; 36960; 29275; 27827;Beef**

\$14.7



**Beef in Black Bean Sauce with Flat Noodles 35913; 26898; 28818; 29275; 27827;**

\$14.7



**Bitter Melon Beef in Black Bean Sauce with Flat Noodles 28092; 29916; 29275; 32905; 28818; 27827;Bitter**

\$14.7



**Bitter Melon Pork Spare Rib in Black Bean Sauce with Flat Noodles 28092; 29916; 25490; 39592; 28818; 27827;Bitter**

\$14.7



**Shrimps in Creamy Scrambled Egg Sauce with Flat Noodles 28369; 34507; 34662; 20161; 28818; 27827;Shrimps**

\$14.7



**Prawns in Creamy Scrambled Egg Sauce with Flat Noodles 28369; 34507; 34662; 29699; 28818; 27827;Prawns**

\$20.4



**Flat Noodles with Supreme Soy Sauce 35913; 27833; 30343; 28818; 27827;Flat**

\$13.7



**Beef in Satay Sauce with Flat Noodles 27801; 29241; 29275; 32905; 28818; 27827;Beef**

\$14.7



**Chicken in Satay Sauce with Flat Noodles 27801; 29241; 40388; 29699; 28818; 27827;Chicken**

\$14.7



**Singapore Fried Rice Vermicelli 26143; 27954; 28818; 31859;Singapore**

\$15.8



**Fried Salted Fish Chicken with Rice Vermicelli 40569; 39770; 40388; 31890; 28818; 31859;Fried**

\$14.7



**Preserved Cabbage Shredded Duck with Rice Vermicelli 38634; 33756; 40232; 32114; 28806; 31859;Preserved**

\$14.7

## Omelettes

---



**Beef Omelette 29275; 32905; 22852; 21015;Beef**

\$21.5



**BBQ Omelette 21449; 29138; 22852; 21015;BBQ**

\$21.2



**Combination Omelette 38620; 29172; 22852; 21015;**

\$25.2



**Prawn Omelette 34662; 29699; 22852; 21015;Prawn**

\$27.9

## House Special

---



**House Special Large BBQ Two Selections 38617; 25340; 29138; 33240;**

\$26.8



**House Special Large BBQ 3 Selections 19977; 25340; 29138; 33240;**

\$30.7



**Pork Spare Ribs in Peking Sauce 20140; 37117; 39592;**

\$21.5



**Pork Spare Ribs in Spicy Salt Chilli 26898; 40573; 39592;**

\$20.4



**Sweet Sour Pork Spare Ribs 29983; 28818; 39592;**

\$20.4



**Spicy Salt Chilli Chicken Ribs 26898; 40573; 38622; 25170;**

\$25.8



**Lemongrass Chicken Ribs 39321; 33541; 38622; 25170;**

\$23.1



**Spinach with Crab Meat Sauce 34809; 32905; 25170; 33760; 33756;**

\$23.6



**Stringless Beans Anchovies XO Sauce XO 27743; 39770; 20180; 22235; 23395; 35910;**

\$23.1



**Stuffed Eggplant with Minced Prawn 29006; 37312; 33540; 23376;**

\$21.5



**Stuff Bean Curd Eggplant Capsicum Minced Prawn 29006; 37312; 23382; 23542;**

\$24.7



**Egg Bean Curd Minced Combination 22235; 23542; 25170; 29577; 23376; 35910; 33104;**

\$23.1



**Spicy Salt Chilli Calamari 26898; 40573; 39799; 39770;**

\$25.8



**Spicy Salt Chilli Flounder 26898; 40573; 24038; 21475; 39770;**

\$27.9



**Deer Meat with Ginger Shallot 23004; 34085; 29190; 40575; 32905;**

\$23.6

## Entree

---



**Steam Dim Sims (3pcs) 33976; 40670; 24515;**

\$7.0



**Fried Dim Sims (3pcs) 28856; 40670; 24515;**

\$7.0



**Fried Won ton (5pcs) 28856; 38642; 21534;**

\$7.0



**Spring Rolls (2pcs) 26149; 25458;**

\$8.1



**Chinese Sausages 33240; 33144;**

\$8.1



**Satay Chicken Skewers (2pcs) 27801; 29241; 38622; 20018;**

\$8.1



**Satay Beef Skewers (2pcs) 27801; 29241; 29275; 20018;**

**\$8.1**



**Sesame Prawns (2pcs) 33437; 40635; 34662;**

**\$8.8**



**Lettuce Wrap (San Choi Bao) 29983; 33756; 21253;**

**\$9.1**



**Quail w Spicy Salt Chilli (Each) 26898; 40573; 40298; 40329;**

**\$9.1**



**Stuffed Crab Claw 28856; 34809; 37463;**

**\$9.2**

## **Congee**

---



**Pork Preserved Egg Congee 30382; 34507; 30246; 32905; 31909;**

**\$12.9**



**Beef Congee 29983; 28414; 29275; 32905; 31909;**

**\$12.9**



**Chicken Congee . 27801; 30000; 38622; 31909;**

**\$12.9**



**Prawn Ball Congee 39854; 34662; 20024; 31909;**

**\$15.6**



**Seafood Congee 28023; 39854; 31909;**

**\$19.3**



**Roast Duck Congee 29138; 40232; 31909;**

\$12.9



**Fish Congee 39770; 29255; 31909;**

\$14.0



**Scallops Congee 24118; 23376; 31909;**

\$16.1



**Chinese Donut 27833; 26781;**

\$4.3

## Hot Pot

---



**Vege Vermicelli with Dry Shrimp 32057; 33756; 31881; 32114; 34662; 31859; 29042;** \$20.4



**Minced Chicken Eggplant with Fish Sauce 39770; 39321; 33540; 23376; 29042;** \$21.2



**Salted Fish with Mince Chicken Bean Curd 40569; 39770; 38622; 31890; 35910; 33104; 29042;** \$21.2



**Pork Belly and Preserved Vege 26757; 33756; 25187; 32905; 29042;** \$20.4



**Beef Brisket 26609; 20399; 29275; 33129; 29042;** \$21.5



**Roast Pork Bean Curd 28779; 33129; 35910; 33104; 29042;** \$21.2



**Taro Chicken with Coconut Sauce 26928; 27713; 33419; 38957; 38622; 29042;**

\$21.2



**Combination Bean Curd 20843; 29645; 35910; 33104; 29042;**

\$23.6



**Pumpkin with Pork Spare Ribs 21335; 29916; 25490; 39592; 29042;**

\$21.5



**Seafood Bean Curd 28023; 39854; 35910; 33104; 29042;**

\$25.8



**Fish Roast Pork Bean Curd 32005; 29138; 26001; 22602; 29042;**

\$23.6



**Vermicelli Prawns 31881; 32114; 34662; 29699; 29042;**

\$29.8



**Pepper Pork Stomach Chicken 32993; 26898; 35948; 32922; 38622; 29042;**

\$23.6



**Roast Pork, Dried Tofu with Fish Head 25903; 31481; 28779; 33129; 39770; 38957; 29042;**

\$23.9



**Red Curry Seafood with Pumpkin 32005; 21654; 21937; 21335; 29916; 28023; 39854; 29042;**

\$25.8

## Sweet & Sour

---



**Sweet Sour Beef (No Batter) 29980; 37240; 29275; 32905;**

\$23.6





**Sweet Sour Pork (with Batter) 21653; 21694; 32905;**

\$21.2



**Sweet Sour BBQ Pork (No Batter) 29980; 37240; 21449; 29138;**

\$21.2



**Sweet Sour Chicken with Batter 29980; 37240; 38622; 32905;**

\$21.2



**Sweet Sour Fish with Batter 29980; 37240; 39770;**

\$23.6



**Sweet Sour Prawns with Batter 29980; 37240; 34662; 29699;**

\$29.0

## **Tofu Dishes**

---



**Pipa Tofu 29749; 29750; 35910; 33104;**

\$23.3

## **Seafood &#28023;&#39854;**

---



**Honey Prawns 34588; 31958; 34662; 29699;**

\$29.0

## **Seafood Dishes &#28023;&#39854;&#39006;**

---



**Prawns with Cashew Nuts 33136; 26524; 34662; 29699;**

\$29.0

## **Main Course &#27491;&#39184;**

---



**Ma Po Tofu 40635; 23110; 35910; 33104;**

\$21.2

## **Beef Dishes &#29275;&#32905;&#39006;**

---



**Stir Fried Beef with Bitter Melon 28092; 29916; 28818; 29275; 32905;**

\$23.6



**Beef with Cashew Nuts 33136; 26524; 29275; 32905;**

\$25.8

## **Rice &#39151;**

---



**Special Fried Rice 25562; 24030; 28818; 39151;**

\$14.9

## **Main Meals &#127869;&#65039;**

---



**Mongolian Beef 33945; 21476; 29275; 32905;**

\$23.6

## Foo Yung &#33433;&#33993;/ Omelette &#22852;&#21015; Dishes

---



Chicken Omelette 38622; 32905; 22852; 21015;

\$21.2

## Chicken &#38622;&#32905;&#39006;

---



Lemon Chicken 27320; 27308; 38622;

\$21.5



Honey Chicken 34588; 31958; 38622;

\$21.5

## Black Bean Dishes &#35910;&#35913;

---



Beef with Black Bean Sauce 35913; 27713; 29275; 32905;

\$23.6

## Vegetables &#127793;

---



Vegetables with Oyster Sauce 34836; 27833; 26178; 33756;

\$19.5



Seasonal Chinese Vegetables 28165; 28818; 26178; 33756;

\$19.5



**Vegetables with Garlic Sauce 33948; 33993; 26178; 33756;**

\$19.5



**Vegetables with Fried Bean Curd 26178; 33756; 35910; 33104;**

\$19.8



**Vegetarian Delight 32645; 28450; 19978; 32032;**

\$20.1



**Chinese Broccoli with Beef 29275; 32905; 33445; 34349;**

\$25.8



**Chinese Broccoli with Prawn Cake 34662; 39173; 33445; 34349;**

\$25.8



**Chinese Broccoli with Mushroom 20908; 33735; 28818; 33445; 34349;**

\$23.0



**Spinach with Abalone Mushroom 30333; 38728; 33735; 25170; 33760; 33756;**

\$21.5



**Spinach in Superior Soup 19978; 28271; 33760; 33756;**

\$23.0



**Gold and Silver Egg Spinach 37329; 37504; 34507; 33760; 33756;**

\$23.3



**Stir Fried String Bean with Chicken 38622; 31890; 22235; 23395; 35910;**

\$23.3



**Stirring Bean with Salted Egg Yolk 40643; 37329; 22235; 23395; 35910;**

\$23.3



**Deep Fried Bean Curd Spicy Salt Pepper 26898; 40573; 35910; 33104;**

\$20.1



**BBQ Pork, Vegetables Bean Curd 32005; 29138; 35910; 33104;**

\$21.2



**Stuffed Bean Curd Minced Prawn 29006; 37312; 35910; 33104;**

\$23.3